



4 Greenwood Avenue,
Bolton Le Sands,
Carnforth LA5 8AN

4, Greenwood Avenue, Bolton Le Sands, Carnforth

The property at a glance

3  1  1 

- Semi Detached Property
- Extensive Rear Garden & Outhouse/ Home Office
- Open Plan Kitchen & Dining Room
- Spacious Lounge
- Four Piece Bathroom
- Driveway Providing Ample Parking
- Sought After Location
- Tenure: Freehold
- Property Banding: C
- EPC: D

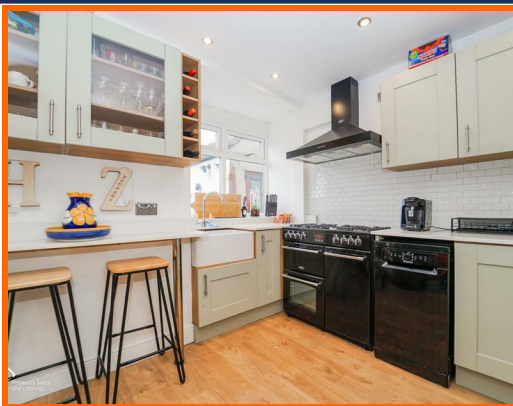


Get in touch today

01524 401402
info@gfproperty.co.uk
gfproperty.co.uk

£284,995

Get to know the property



Situated on Greenwood Avenue in Bolton Le Sands, Carnforth, this delightful semi-detached house presents an excellent opportunity for families and professionals alike. With three well-proportioned bedrooms, this property offers ample space for comfortable living. The inviting reception room is perfect for relaxation, while the spacious lounge provides a warm and welcoming atmosphere for gatherings with family and friends.

The heart of the home is undoubtedly the open-plan kitchen and dining area, designed to foster a sense of togetherness. This modern space is ideal for both casual meals and entertaining guests, making it a versatile area for everyday living.

One of the standout features of this property is the extensive garden, which offers a wonderful outdoor retreat. Whether you wish to cultivate a garden, enjoy al fresco dining, or simply unwind in the fresh air, this outdoor space is sure to impress. Additionally, the fantastic outhouse presents an excellent opportunity for a home office, providing a quiet and dedicated space for work or study.

For those with vehicles, the property boasts a driveway that accommodates off-road parking for two vehicles, ensuring convenience and ease of access.

In summary, this semi-detached house on Greenwood Avenue combines modern living with the charm of a





spacious garden and practical amenities. It is an ideal choice for anyone seeking a comfortable and versatile home in a lovely location.

Entrance

UPVC double glazed door to hall.

Hall

Central heating radiator, laminate floor, doors to reception room, dining room and understairs storage.

Reception Room

UPVC double glazed window, central heating radiator, coved ceiling.

Dining Room

Central heating radiator, coved ceiling, electric fireplace, space for American style fridge freezer, wood laminate flooring, UPVC double glazed French door to rear, opening to kitchen.

Kitchen

UPVC door, ceramic Belfast sink with mixer tap and drainer board, space for oven, space for dishwasher, integral extractor fan, wall and base units with quartz worktops, tiled splash back, wood laminate flooring, spotlighting.

Landing

UPVC double glazed window, door to bedrooms 1,2, 3 and bathroom.

Bedroom 2

UPVC double glazed window, central heating radiator, coved ceiling.

Bedroom 3

UPVC double glazed window, central heating radiator, wood laminate flooring.

Bathroom

UPVC double glazed window, central heating radiator, WC, wash basin with mixer tap, paneled bath with mixer tap and waterfall tap, rainfall shower rinse, part tiled electric, tile effect floor, sliding door to boiler/storage cupboard.

Family Rear Garden

Good sized lawned area with outhouse (ideal for home office).



4 Greenwood Avenue, Bolton Le Sands, Carnforth, LA5 8AN



4 Greenwood Avenue, Bolton Le Sands, Carnforth, LA5 8AN

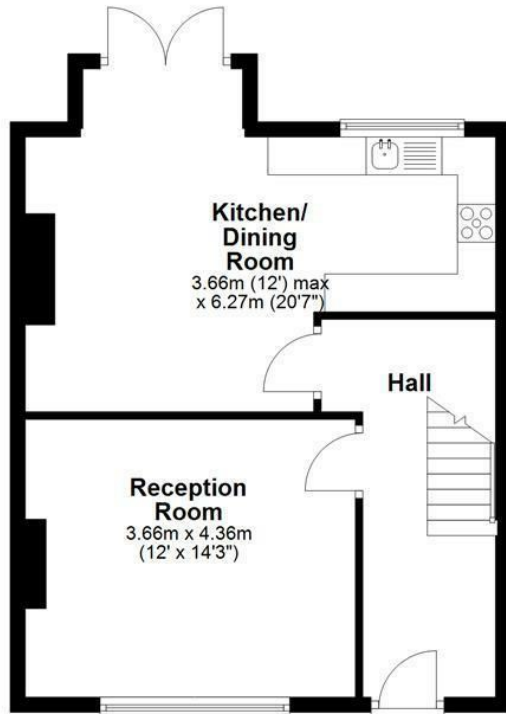


Get in touch today

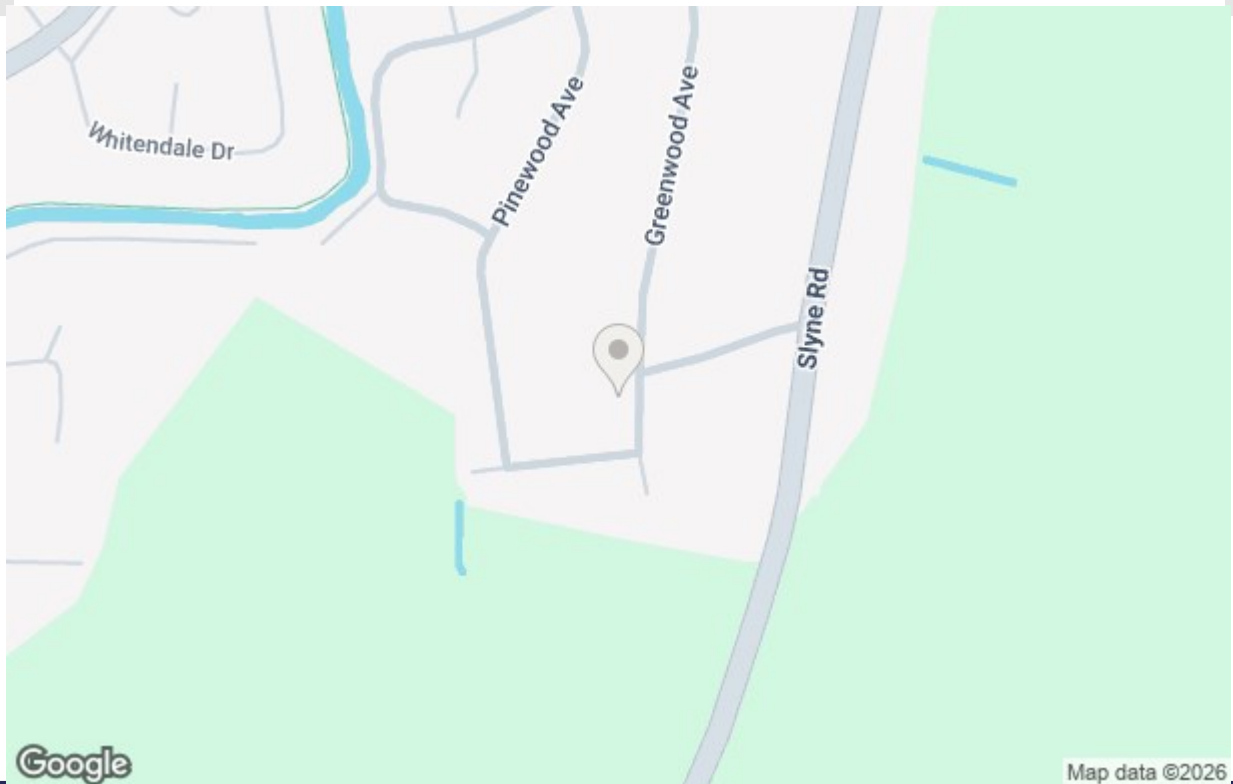
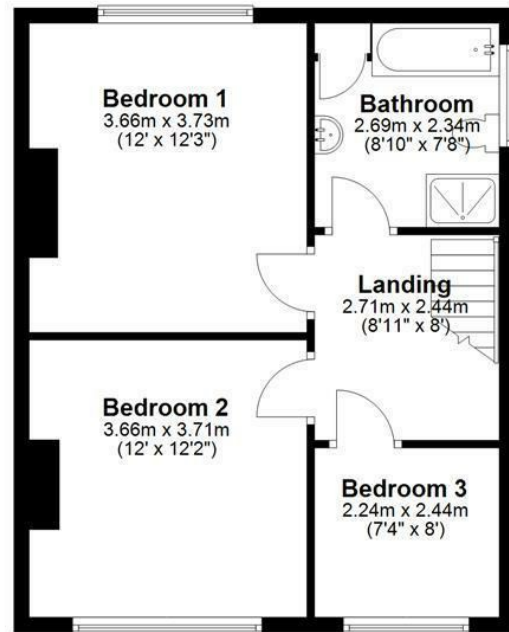
01524 401402
info@gfproperty.co.uk
gfproperty.co.uk

Take a nosey round

Ground Floor



First Floor



Get in touch today

01524 401402
info@gfproperty.co.uk
gfproperty.co.uk

Energy Efficiency Rating		Current	Potential
Very energy efficient - lower running costs			
(92 plus) A			
(81-91) B			
(65-80) C			
(55-64) D			
(39-54) E			
(21-38) F			
(1-20) G			
Not energy efficient - higher running costs			
England & Wales		EU Directive 2002/91/EC	

Environmental Impact (CO ₂) Rating		Current	Potential
Very environmentally friendly - lower CO ₂ emissions			
(92 plus) A			
(81-91) B			
(65-80) C			
(55-64) D			
(39-54) E			
(21-38) F			
(1-20) G			
Not environmentally friendly - higher CO ₂ emissions			
England & Wales		EU Directive 2002/91/EC	